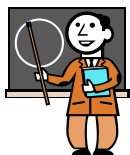


# Australian Bridge Teachers Association

## Annual General Meeting



The Annual General Meeting of the Australian Bridge Teachers Association will be held in the Executive Room, Rydges Lakeside Canberra from 9.30am to 10.30am on Sunday 21 January. All bridge players are welcome. If you would like the ABTA to assist bridge teaching in your locality, please talk to an ABTA office bearer at the end of the AGM.

# Australian Bridge Directors Association

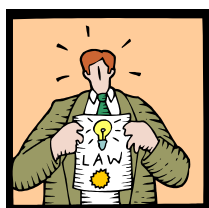


## Annual General Meeting

The Annual General Meeting, including the election of office bearers, of the Australian Bridge Directors Association will be held at 8.00pm on Wednesday 24 January in the Executive Room, Rydges Lakeside Canberra. Anyone interested in directing is welcome. Light refreshments will be provided.

For further information about the Australian Bridge Directors Association, email the ABDA Secretary, Gary Wilson: [garyw2@bigpond.net.au](mailto:garyw2@bigpond.net.au)

## Regulations:



System and Alerting Regulations for ABF Events can be found on the ABF Website [www.abf.com.au](http://www.abf.com.au)

Supplementary regulations for the Summer Festival of Bridge will be posted on the ABF Website in December 2006.

## Playoff Points:



The following Playoff Points will be allocated to eligible members of eligible teams

National Women's Teams 1<sup>st</sup> - 72, 2<sup>nd</sup> - 36, 3<sup>rd</sup> - 18, 4<sup>th</sup> - 18

National Seniors' Teams 1<sup>st</sup> - 72, 2<sup>nd</sup> - 36, 3<sup>rd</sup> - 18, 4<sup>th</sup> - 15, 5<sup>th</sup> - 12, 6<sup>th</sup> - 9

National Open Teams 1<sup>st</sup> - 72, 2<sup>nd</sup> - 36, 3<sup>rd</sup> - 18, 4<sup>th</sup> - 18, 5<sup>th</sup> - 8<sup>th</sup> 9.

The teams placed first in the National Seniors Team Swiss, National Women's Team Swiss and South West Pacific Teams receive 24 Playoff Points if they do not make the final.

If your Team Intends to Use the **FREE BUS SERVICE** during the 2007 Summer Festival please complete the form below

Pickup Point(Tick)	<b>Saville Apartments</b>		<b>Crowne Plaza</b>		<b>University House</b>		<b>Rydges Lakeside</b>	
Number of Players travelling								
Destination (tick)	<b>Rydges</b>		<b>Hellenic Club</b>					
Event(s) Being played (name)								